

Dash Parkour





Dash Parkour equipment is meant for parkour training in public areas. It was born and molded by parkour as a culture. A careful research revealed that the practitioners of parkour have great respect for the values of the sport and other practitioners. This became the central point of the Dash Parkour: parkour is valued in the equipment itself. The products are developed by parkour people to parkour people.

All Dash Parkour equipment and layouts are designed together with parkour professionals from Parkour Academy of Finland. The name Dash Parkour comes from a movement that Parkour Academy of Finland developed: Dash Vault.

Every element and component are designed for one purpose: to excel as a multi-functional parkour equipment. All the functions and moves of parkour can be easily found because Dash Parkour is also intuitive: it guides user to move parkour-like and both professionals and beginners find exciting things to do over and over again.

WHAT IS DASH PARKOUR?

- All Dash Parkour spots offer a lot to do even in the smallest area, because the equipment itself is versatile and they are always on the right distance to each other.
- The look of Dash Parkour is appealing and street credible also among parkour traceurs: Dash Parkour inspires to move.
- The equipment provides something for all levels of practitioners and situations: there are many different angles, different types of surfaces to jump, land and balance.
- The materials of the equipment are the best available for the users.
- Dash Parkour is designed by parkour people to parkour people even in the smallest details. The parkour professionals behind the product line are able to reflect all the needs of different levels from children to grown ups and beginners to professionals in the product line.

FUNCTIONALITY

- All the functions/moves of parkour can be found easily in the areas.
- Intuitive: guides users of all skill levels to move parkour-like and both professionals, beginners and people totally new to the sport find exciting things to do.
- Lot of details such as handles, surfaces and bars in different angles multiply the number of functions and make the skill level scalable.
- Anti-slip wall provides friction where needed.
- Walls in different angles, a lot of different surfaces.

Visuality comes from parkour culture

Visual nature of Dash Parkour springs from the streets, merging with modern, geometric visual world. The shapes and materials create a monumental and sinking feel to the product. This gives a small hint of post-apocalyptic wibe with its sunken elements and broken colored wall murals.

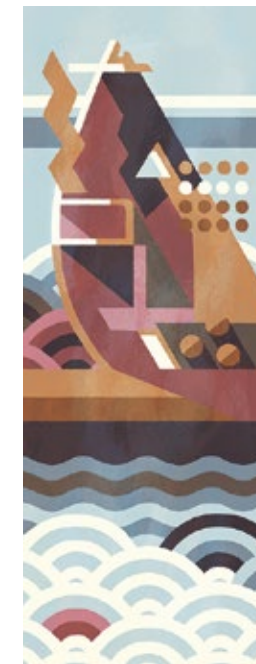
The color base of the product is created with toned down grey palette. Wall murals, born from and representing parkour, bring the visual world to life along with colors derived from these murals. All the murals got their content and inspiration from Parkour, representing it's most iconic and known elements.

- **Dame du Lac** is the most known and iconic monument within parkour world. It is famous for it's dangerous yet alluring shapes and forms, and parkouring on the French monument has caused it being closed from public. People still travel there to take a sneak at it.
- **Worn Shoes** presents harmonious old shoes, worn out especially from under the ball of foot, which is very identifiable in parkour.
- **Parkour Pose** presents an abstracted figure in a typical parkour pose, surrounded by a broken urban environment.
- **Abstract** continues and takes forward the initial idea of geometrically overlapping forms and optical illusions of Lappset Dash Parkour products.

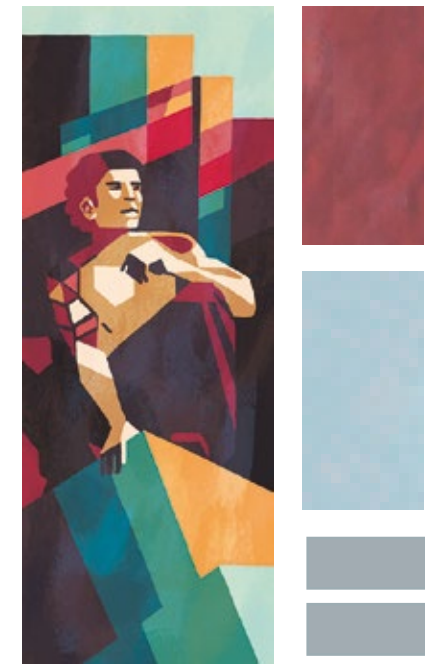
Illogical directions and tilted shapes create a playful visual continuum and provide a new layer of activities, as they work as pathways for the users to follow and aim at. With all of these aspects carefully thought through, we end up with an authentic and vibrant product which is naturally applicable to almost any kind of environment and approachable and intuitive to users from all target groups.

It will also be visually attractive to people from outside of parkour and give the local community great value by bringing Parkour closer to it and making it a part of the local infratructure.

Dame du Lac



Parkour Pose



Worn Shoes



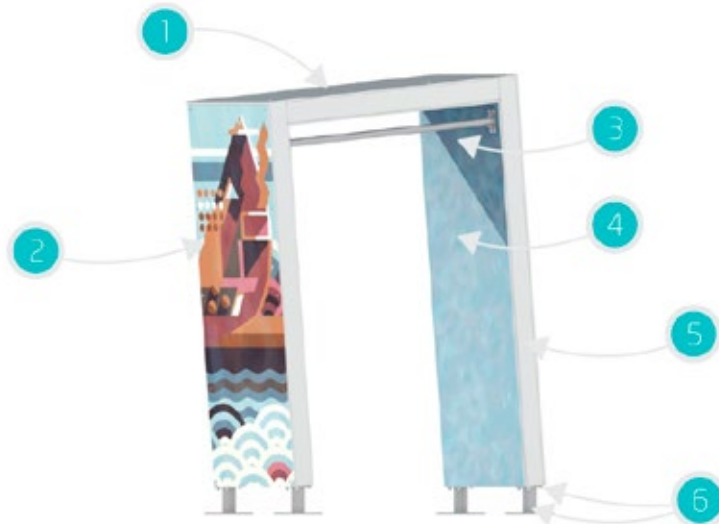
Abstract



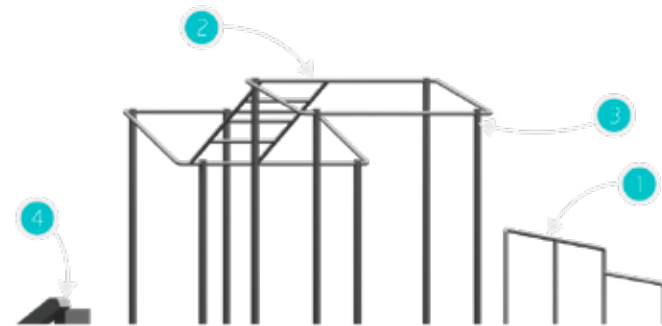
THEMES AND COLOURS

- Four ready themes: Dame du Lac, Parkour Pose, Worn Shoes, Abstract
- Colour of the wooden frame: RAL 7040
- Colour of the metal frame RAL 9022

Materials



1. **Anti-slip surface:** plywood covered with anti-slip surface. A high quality coated panel, designed for heavy use. Highly durable against wear and different weather conditions. Ecological, as it minimizes the use of plastic, and is easily recyclable unlike concrete.
2. **Outer wall graphics:** Print HPL. HPL is widely used in public outdoor spaces. Good impact resistance, improved abrasion, chemical resistance and UV protection. Good impact resistance, improved abrasion, chemical resistance and UV protection.
3. **Metal bars:** All the grips, bars and hanging tubes are made of galvanized steel pipe 42 mm in diameter. Surface treatment chosen galvanized in order to optimize the best grip in different weather conditions, reach the best duration and avoid the wear out in hard use. Material chosen is robust enough also for harder use and in longer tubes.
4. **Inner surfaces:** Print HPL. HPL is widely used in public outdoor spaces. Good impact resistance, improved abrasion, chemical resistance and UV protection.
5. **Wooden frames:** Strong structure to endure the hard use. The same profile that has proven robust in Lappset Fitness products.
6. **Foundations and fastening:** Deep foundations: with hot-dip galvanized structural steel feet, concrete used for some of the products. Surface foundations: with steel feet fastened into concrete. Robust and durable to cope with the strains of the sport. No wooden parts touching the ground. Fastenings: Stainless or hot galvanized steel screws and bolts.



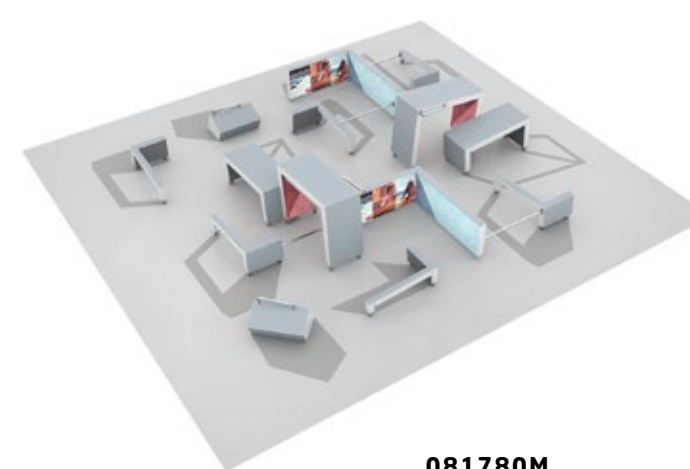
1. **Balance railing:** Rails made of galvanized steel pipe: 60 mm diameter and 2,4 mm thick. Optimal structure for balancing, but not too thick for hanging in movements going under the rail.
2. **Hanging tubes and grips:** All the grips, bars and hanging tubes are made of galvanized steel pipe: 42 mm in diameter and 3 mm thick, which is a suitable dimension to grip. Surface treatment chosen galvanized in order to optimize the best grip in different weather conditions, reach the best duration and avoid the wear out in hard use. Material chosen is robust enough also for harder use and in longer tubes.
3. **Hanging equipment:** body frame: Vertical tubes in hanging equipment are of painted metal pipe: 76 mm in diameter and 3 mm thick. The use of vertical frame is not as demanding as use of hanging tubes. The painting is done according to the Lappset Lappcoat standards and the colour is Grey shimmer RAL 9022.
4. **Balancing beams and steps:** The body of the beam and steps is made of galvanized tube structures: 120x120x5 mm. Strong structures and ready to be installed without assembling.

Ready layouts

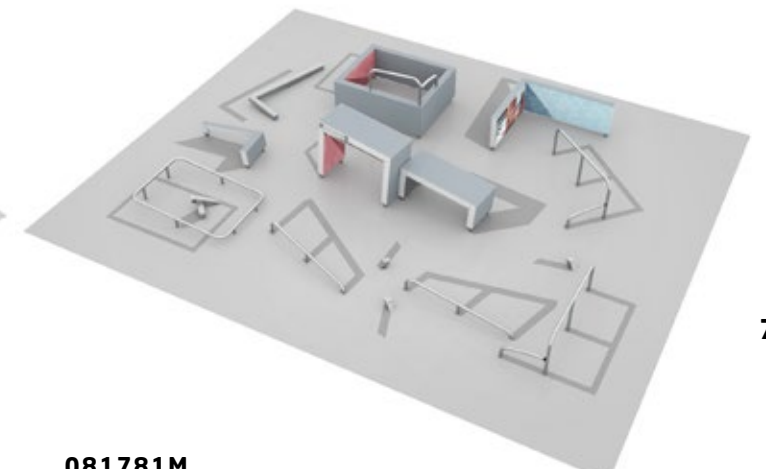
The placing of the equipment in a parkour area is very precise work. The designer needs to know the capabilities of various user groups. In Dash Parkour all the pre-designed layouts are designed by parkour professionals. In Dash Parkour there are two types of pre-designed layouts: spots and modules.

Spots

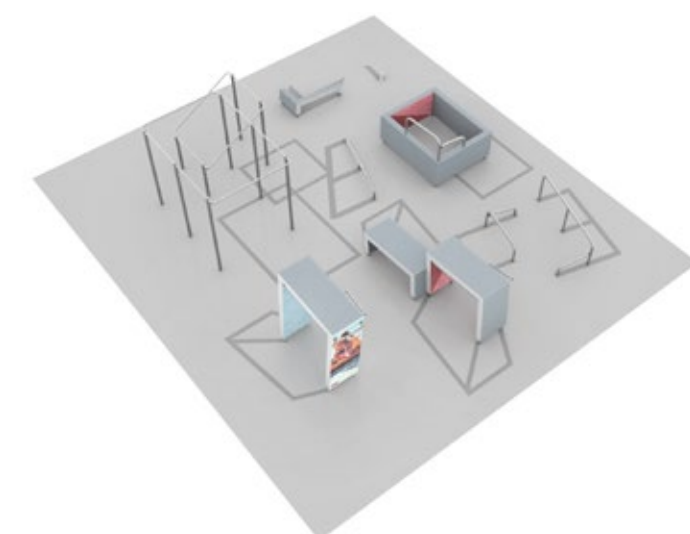
Spots consist of a ready-to-go parkour area where you do not need to add anything.



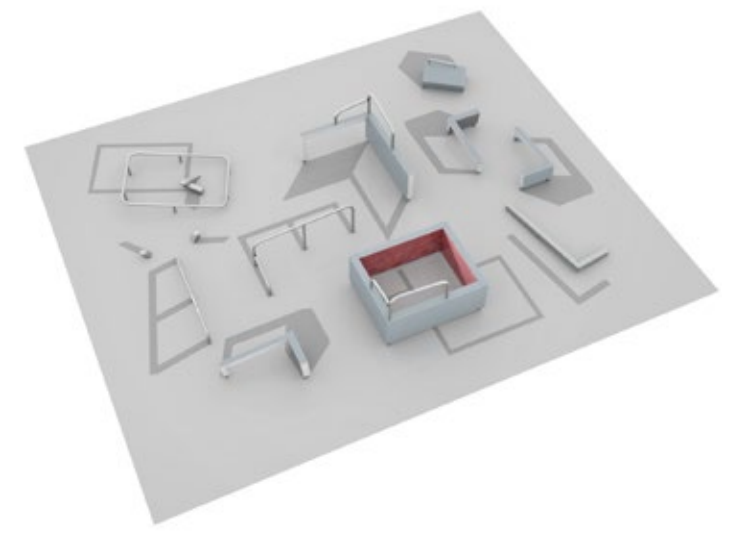
081780M
SPOT S1



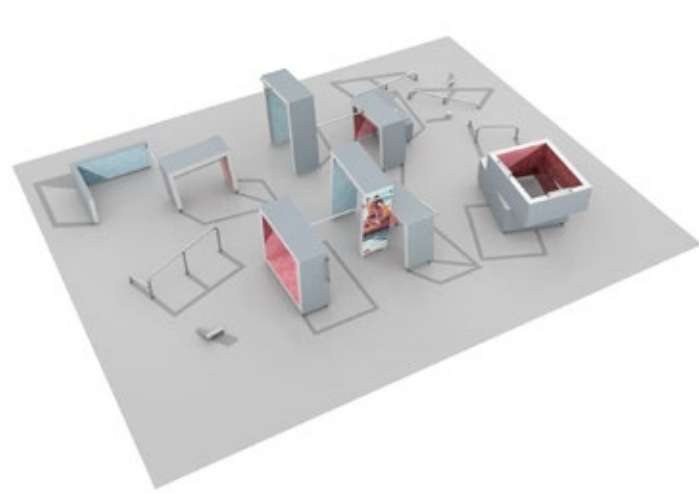
081781M
SPOT S2



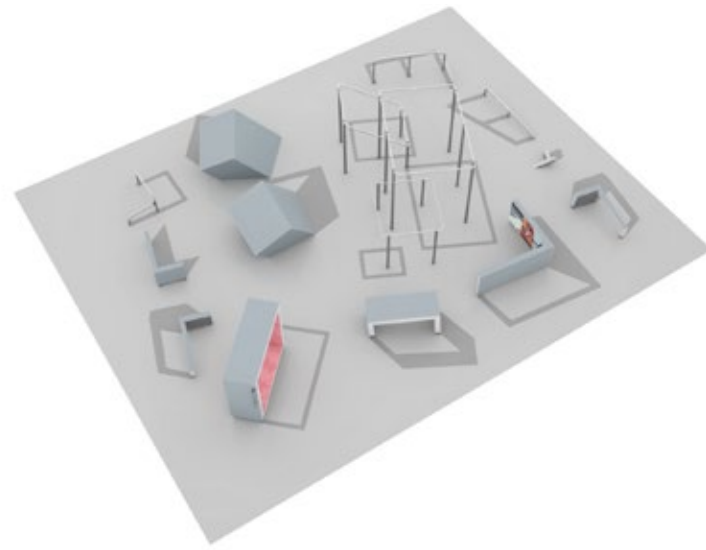
081782M
SPOT S3



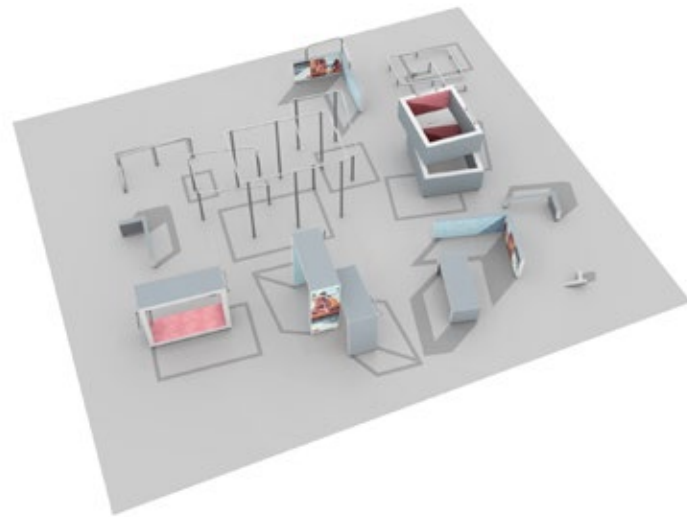
081783M
SPOT S4



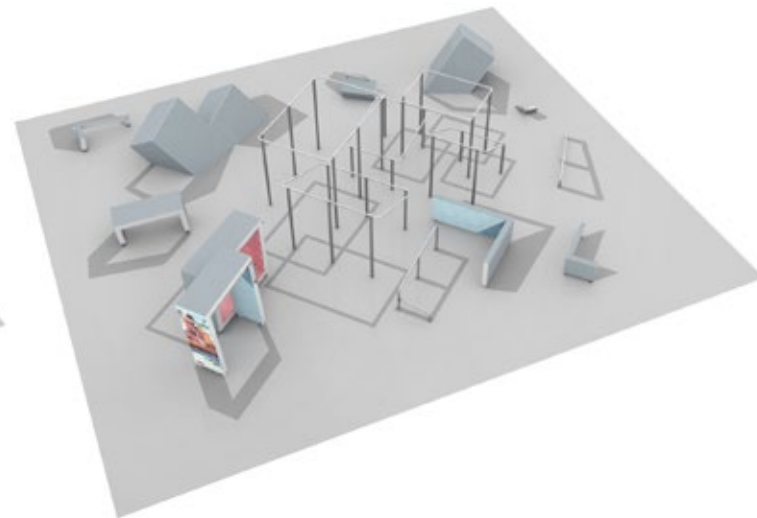
**081784M
SPOT M1**



**081785M
SPOT M2**



**081786M
SPOT L1**



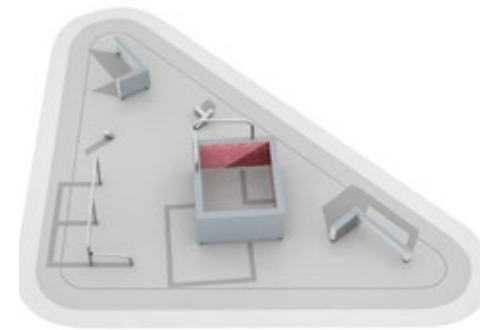
**081787M
SPOT L2**

8

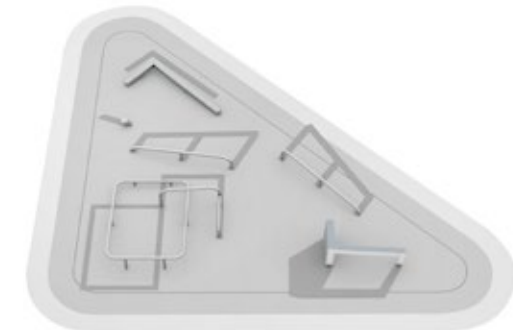


Modules

Modules are affordable micro-layouts with only equipment in them based on different practices. With Dash Parkour modules anybody can design unique and well planned parkour-areas according to the standard. This is done by placing two or more modules together with a simple set of rules.



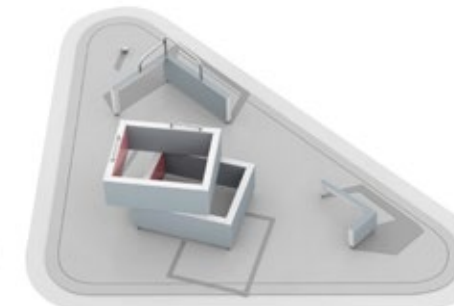
**081760M
MODULE 1:
VAULT & JUMP**



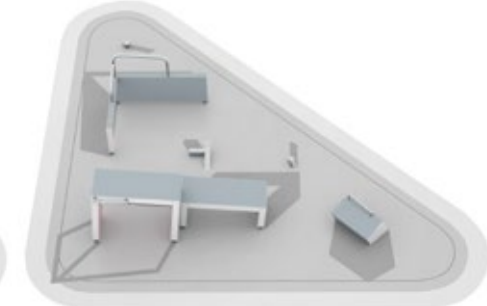
**081761M
MODULE 2:
BALANCE & FOOT PLACEMENT**



**081762M
MODULE 3:
VAULT & PRECISION**



**081763M
MODULE 4:
CAT LEAP & UNDERBAR**

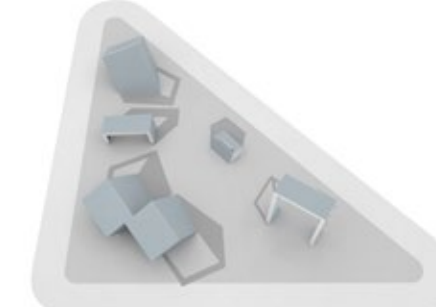


**081764M
MODULE 5:
UNDERBAR & PRECISION**

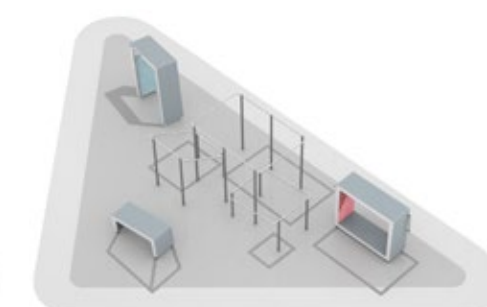
9



**081765M
MODULE 6:
HANGING & CAT LEAP**



**081766M
MODULE 7:
TIC TAC & CAT LEAP**



**081767M
MODULE 8:
HANGING & WALL RUN**

Products

Dash Parkour has a design patent.

10



DEX STEP
081700M



DEX LANDING
081701M



DEX BOX
081702M



DEX BEAM
081703M



RAIL LINE
081710M



RAIL CORNER LOW
081711M



RAIL CORNER HIGH
081712M



RAIL SQUARE
081713M



VAULT S
081720M



VAULT M
081721M



VAULT L
081722M



VAULT LU
081726M



VAULT LX
081723M



VAULT LXU
081727M



VAULT SQUARE U
081728M



VAULT SQUARE
081724M



BASE S
081730M



BASE M
081731M



BASE L
081732M



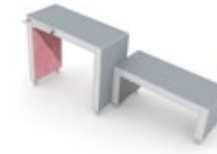
BASE FRAME
081733M



BASE PILE
081734M



BASE DOUBLE S1
081735M



BASE DOUBLE S2
081736M



BASE DOUBLE M
081737M



BASE DOUBLE L
081738M



BLOCK S
081740M



BLOCK M
081741M



BLOCK DOUBLE S
081743M



BLOCK DOUBLE M
081744M



BLOCK TRIPLE
081745M



CAGE S
081750M



CAGE M
081751M



CAGE L
081752M

11

Please note! The products are not in any scale at all. Visit www.lappset.com for more detailed information.



 **LAPPSET**®

LAPPSET SPORT

CONTACT YOUR LOCAL DEALER

[WWW.LAPPSET.COM/
CONTACT-US](http://WWW.LAPPSET.COM/CONTACT-US)

LAPPSET GROUP LTD

PL 8146, Hallitie 17
96101 Rovaniemi FINLAND

+358 20 775 0150
lappset@lappset.com
www.lappset.com